

### KTR-30

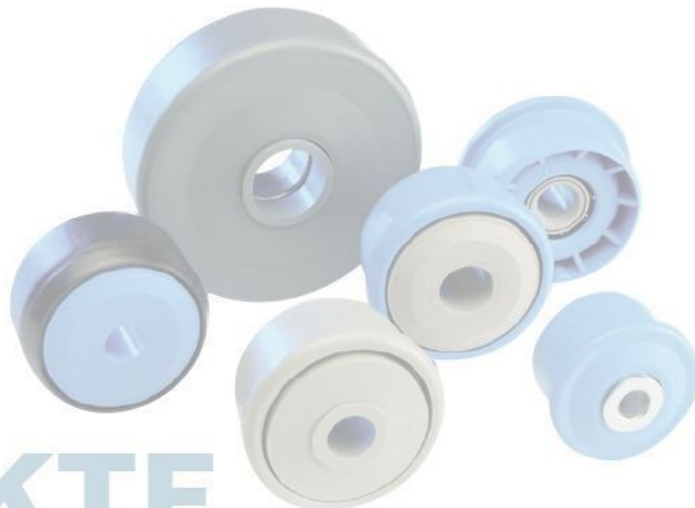
Typ	Di +0,2	Da	C [daN]
KTR-50x1,5.30	47,3	49,9	80
KTR-50x2,8.30	44,6	49,9	80
KTR-60x1,5.30	57,3	59,9	80

Piasta i koszyk kul z tworzywa sztucznego.

Łożysko typu RL-30.

Pierścien zewnętrzny i wewnętrzny z hartowanej stali.

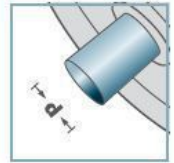
Kule ze standardowej stali łożyskowej.



### KTR-30



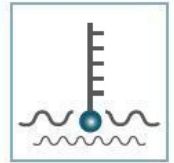
**D** [mm]  
50 - 60



**d** [mm]  
8; 10; 12; 15;  
SW11



**C** [daN]  
80



**T** [°C]  
0° - 80°



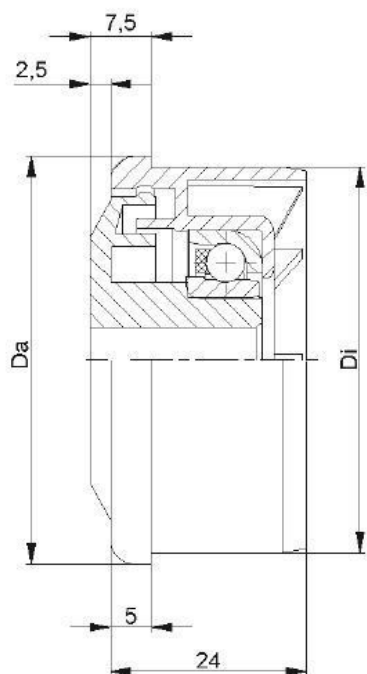
Vactra No. 2



**Karton** [Stck.]

250

# KTR/KTE

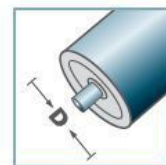


KTR-31			
Typ	Di +0,2	Da	C [daN]
KTR-50x1,5.31	47,3	49,9	25
KTR-50x2,8.31	44,6	49,9	25
KTR-60x1,5.31	57,3	59,9	25

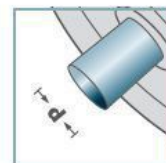
Piasta i koszyk kul z tworzywa sztucznego.  
 Łożysko typu RL-31.  
 Pierścień zewnętrzny stal 1.4301  
 Pierścień wewnętrzny stal 1.4305  
 Kule stal 1.4301



## KTR-31



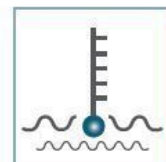
**D** [mm]  
50 - 60



**d** [mm]  
8; 10; 12; 15;  
SW11



**C** [daN]  
25



**T** [°C]  
0° - 80°

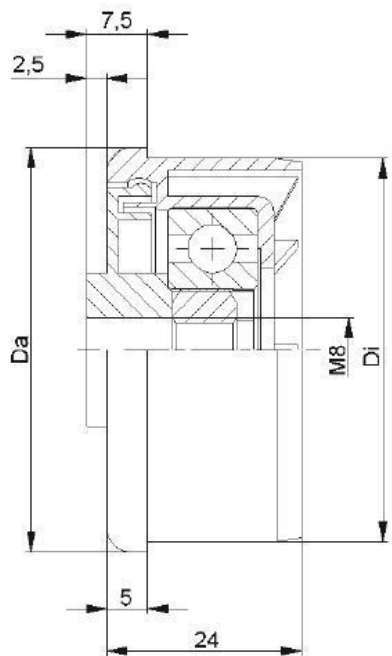


Vactra No. 2



**Karton** [Stok.]

250



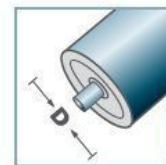
### KTR-40.M8

Typ	Di +0,2	Da	C [daN]
KTR-50x1,5.40	47,3	49,9	80

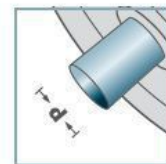
Piasta z tworzywa sztucznego.  
 Łożysko typu 6202.  
 Piasta z wmontowaną nakrętką M8.



### KTR-40.M8



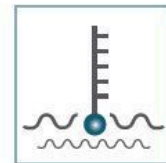
**D** [mm]  
50 - 60



**d** [mm]  
M8



**C** [daN]  
80



**T** [°C]  
0° - 80°



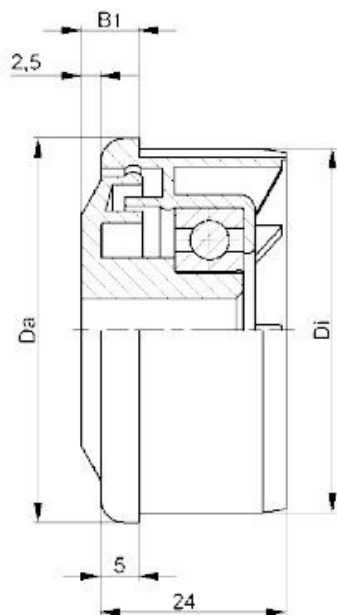
EP 2



**Karton** [Stck.]

ø50: 250  
ø60: 100

# KTR/KTE



KTR-42				
Typ	Di +0,25	Da	B1	Tragzahl C [daN]
KTR-40x1,5.42	37,2	39,9	9,0	80
KTR-50x1,5.42	47,3	49,9	7,5	80
KTR-50x2,0.42	46,3	49,9	7,5	80
KTR-50x2,8.42	44,6	49,9	7,5	80
KTR-60x1,5.42	57,3	59,9	7,5	80
KTR-60x2,0.42	56,3	59,9	7,5	80

Piasta z tworzywa sztucznego.  
Łożysko typu 6002.

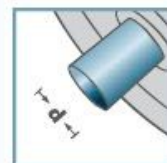
Dla osi fi 15 mm, pokrywka uszczelniająca dostarczana luzem (mocowanie na osi)



## KTR-42



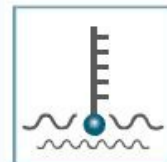
**D** [mm]  
40 - 60



**d** [mm]  
10; 12; 15; SW11



**C** [daN]  
80



**T** [°C]  
0° - 80°



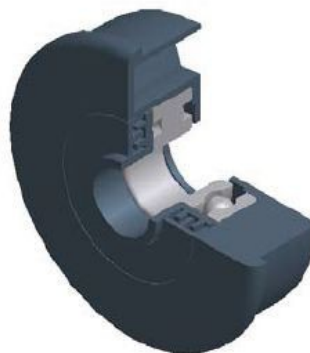
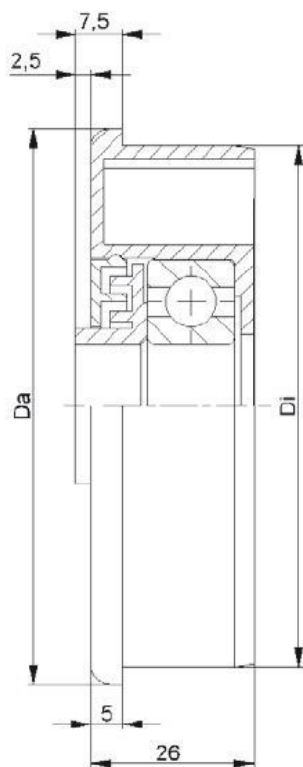
EP 2



**Karton** [Stok.]

ø50: 250  
ø60: 100

# KTR/KTE

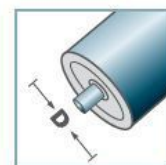


KTR-44			
Typ	Di +0,2	Da	C [daN]
KTR-89x3,0.44	83,3	88,9	150

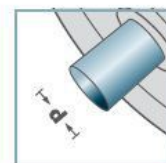
Piasta z tworzywa sztucznego.  
Łożysko typu 6204.



### KTR-44



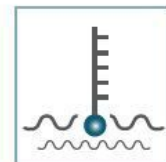
**D [mm]**  
89



**d [mm]**  
20



**C [daN]**  
150



**T [°C]**  
0° - 80°

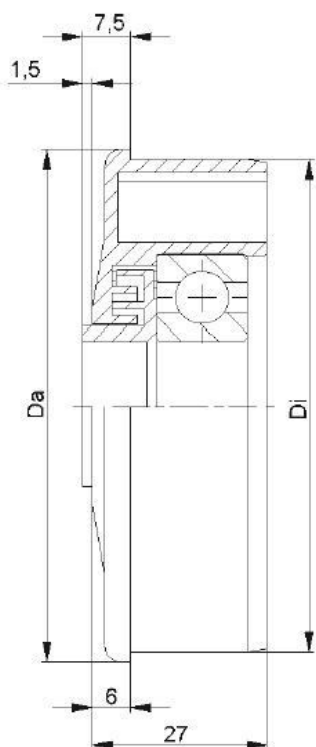


EP 2



**Karton [Stck.]**

80



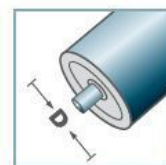
### KTR-43/44

Typ	Di +0,2	Da	C [daN]
KTR-63,5x2,9.43/.44	58,0	63,4	150
KTR-80x2,0.43/.44	76,4	79,9	150

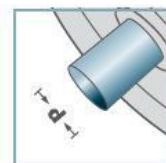
Piasta z tworzywa sztucznego.  
Łożysko typu 6303/6204.



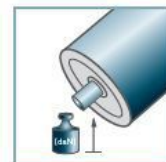
### KTR-43/44



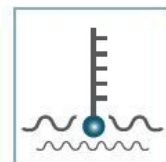
**D** [mm]  
63,5 - 80



**d** [mm]  
6303: 17  
6204: 20



**C** [daN]  
150



**T** [°C]  
0° - 80°

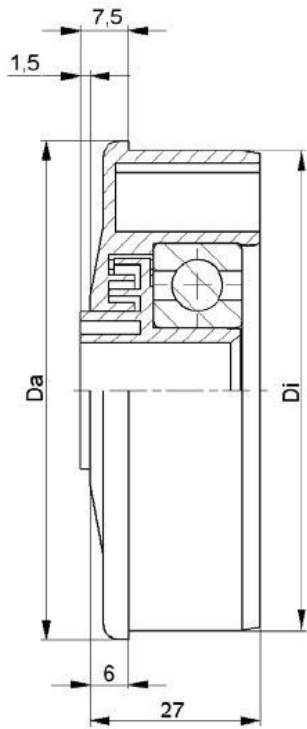


EP 2



**Karton** [Stok.]

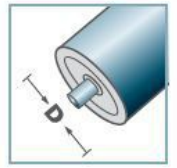
100



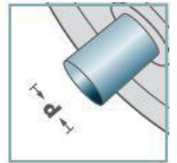
### KTR-43/44

Typ	Di +0,2	Da	C [daN]
KTR-63,5x2,9.43/.44	58,0	63,4	150
KTR-80x2,0.43/.44	76,4	79,9	150

### KTR-43/44



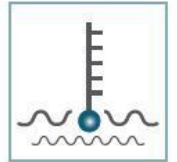
**D** [mm]  
63,5 - 80



**d** [mm]  
6303: 12  
6204: 15



**C** [daN]  
150



**T** [°C]  
0° - 80°



EP 2

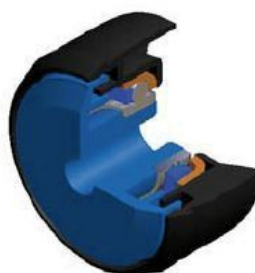
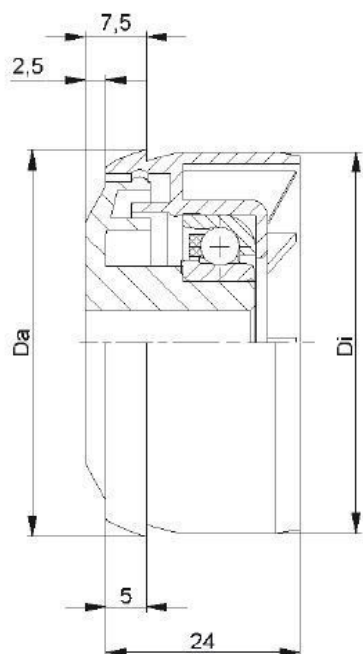


**Karton** [Stck.]

100

KTR/KTE





KTE-30			
Typ	Di +0,3	Da	C [daN]
KTE-50x1,5.30	47,1	47,9	80

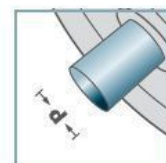
Piasta z tworzywa sztucznego.  
Łożysko stalowe typu RL-30



### KTE-30



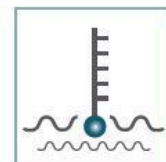
**D** [mm]  
50



**d** [mm]  
10; 12; 15;  
SW11



**C** [daN]  
80



**T** [°C]  
0° - 80°



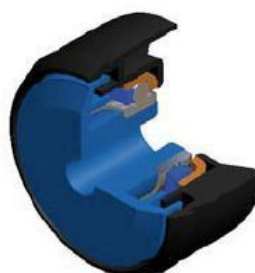
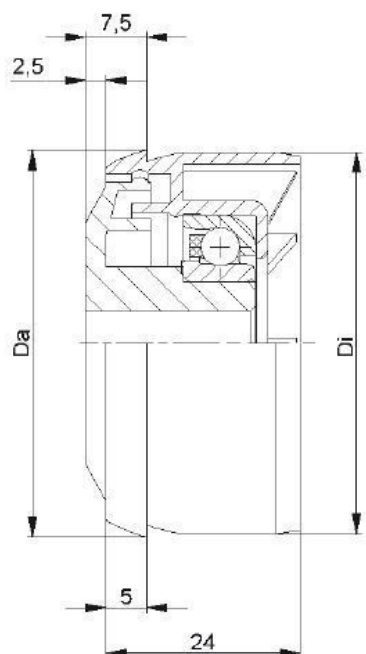
Vactra No. 2



**Karton** [Stck.]

250





KTE-31			
Typ	Di +0,3	Da	C [daN]
KTE-50x1,5.31	47,1	47,9	25

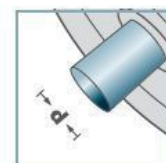
Piasta z tworzywa sztucznego.  
 Łożysko RL-31  
 pierścień zew.: stal 1.4301  
 pierścień wew.: stal 1.4305  
 kule: stal 1.4301  
 koszyk z tworzywa sztucznego



### KTE-31



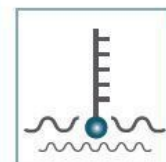
**D** [mm]  
50



**d** [mm]  
10; 12; 15;  
SW11



**C** [daN]  
25



**T** [°C]  
0° - 80°

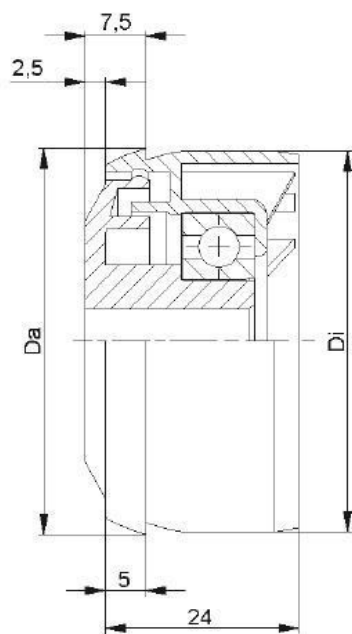


Vactra No. 2



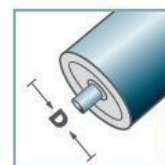
**Karton** [Stck.]

250

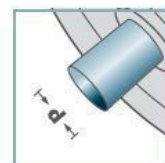
**KTE-42**

Typ	Di +0,3	Da	C [daN]
KTE-50x1,5.42	47,1	47,9	80

Piasta z tworzywa sztucznego.  
Łożysko 6002.

**KTE-42**

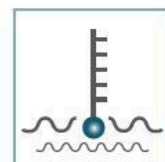
**D** [mm]  
50



**d** [mm]  
10; 12; 15;  
SW11



**C** [daN]  
80



**T** [°C]  
0° - 80°



EP 2



**Karton** [Stck.]

250