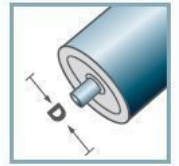


SLR	
Typ	C [daN]
SLR-480	20

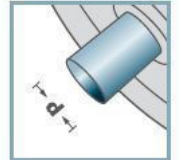
Rolka stalowa ocynkowana

SLR-



D [mm]

-



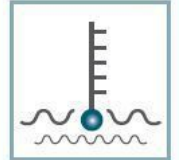
d [mm]

6; 8



C [daN]

20



T [°C]

-30° - 140°



-

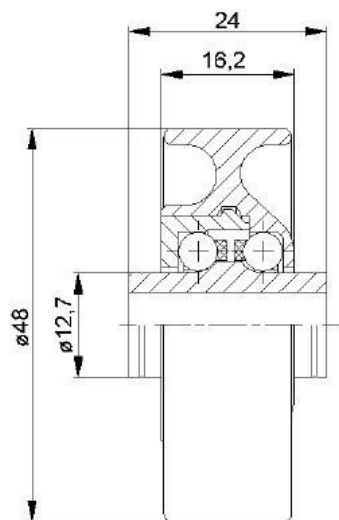


Karton [Stck.]

250



KLR/SLR/SR



KLR-02/03

Typ	Normal	Niro	C [daN]
KLR-480	.02	.03	10

Rolka z tworzywa sztucznego.
Kule dla wykonania:
02 standardowa stal łożyskowa
03 stal 1.4034

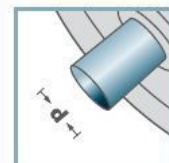


KLR-02 KLR-03



D [mm]

-



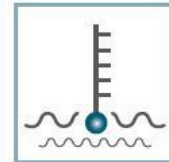
d [mm]

6; 8



C [daN]

10



T [°C]

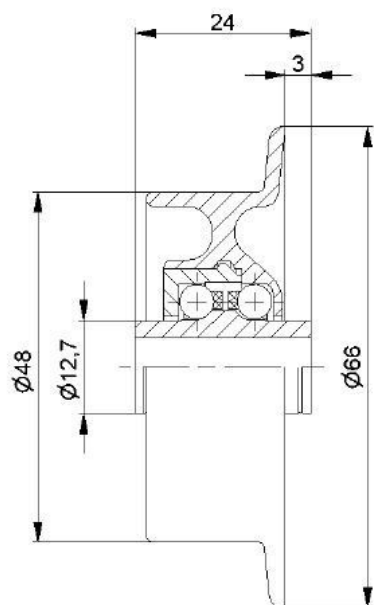
0° - 80°



Karton [Stck.]

250

KLR/SLR/SR


SR-02/03

Typ	Normal .02	Niro .03	C [daN]
SR-480	x	x	10

Rolka kołnierзова z tworzywa sztucznego.

Kule dla wykonania:

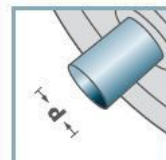
02 standardowa stal łożyskowa

03 stal 1.4034


**SR-02
SR-03**


D [mm]

-



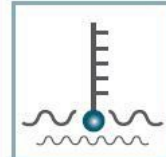
d [mm]

6; 8



C [daN]

10



T [°C]

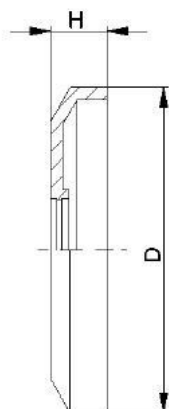
0° - 80°



Karton [Stck.]

250

KLR/SLR/SR



DK-KLR		
Typ	D	H
DK-KLR-02	40,5	7

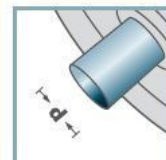
Pokrywka uszczelniająca z tworzywa sztucznego.

DK-KLR-02



D [mm]

-



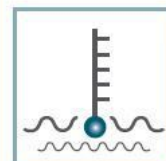
d [mm]

-



C [daN]

-



T [°C]
0° - 80°



-



Karton [Stck.]



KLR/SLR/SR

