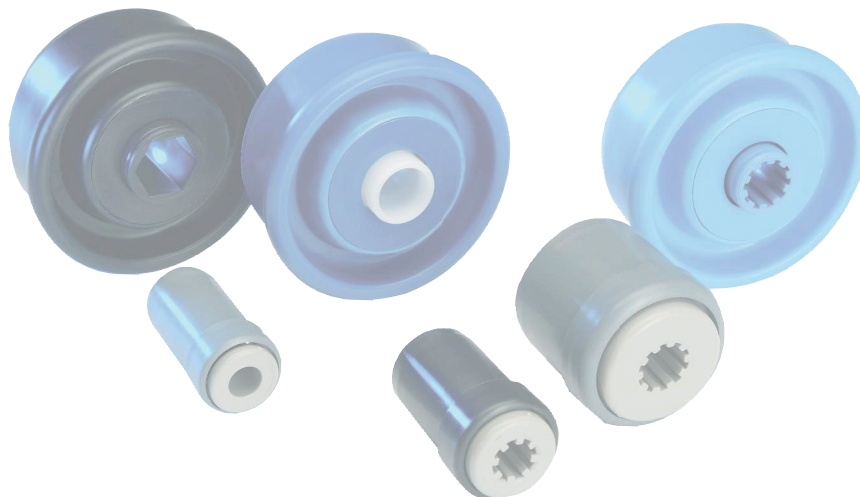


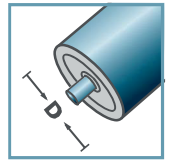
#### KTR-.00/.01 FA

Typ	Normal	Stainless	Di +0,25	Da	d	Load Rating C [daN]
	.00	.01				
KTR-20x1,5	x	x	17,1	19,9	6	8
KTR-30x1,8	x	x	26,5	29,9	8	10
KTR-40x2,3	x	x	35,5	39,9	8	10
KTR-50x2,8	x	x	44,6	49,9	10	15

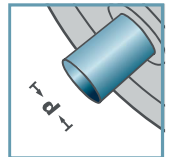
Piasta z tworzywa sztucznego.  
Kule i sprężyna w wykonaniu:  
00 - standardowa stal łożyskowa  
01 - stal nierdzewna 1.4034



KTR-.00 FA  
KTR-.01 FA



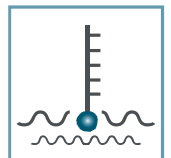
D [mm]  
20, 30, 40, 50



d [mm]  
6; 8; 10



C [daN]  
8 - 15

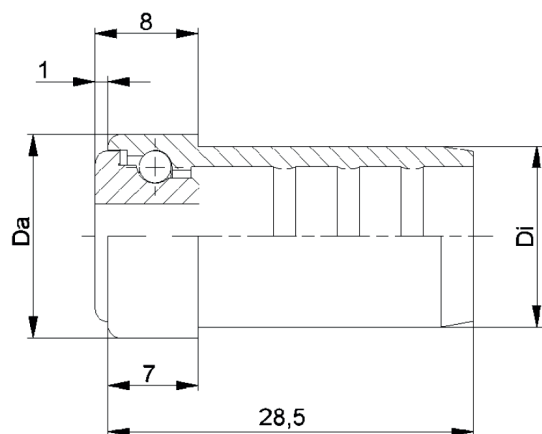


T [°C]  
0° - 80°



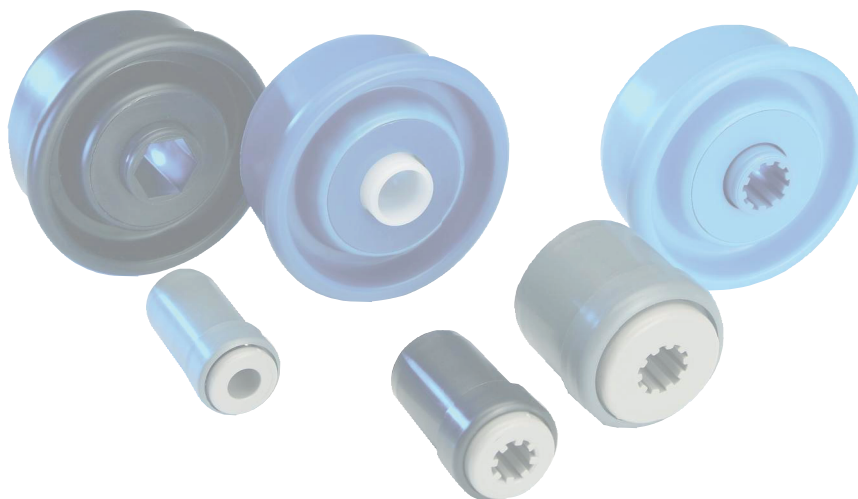
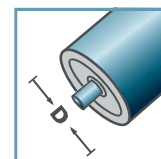
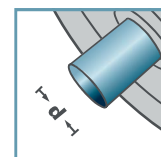
Carton [pcs.]

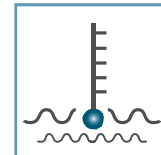
# KTR


**KTR-16.00/01**

Typ	Normal .00	Stainless .01	Di +0,15	Da	Load Rating C [daN]
KTR-16x1,0	x	x	14,1	15,9	3

Piasta z tworzywa sztucznego.  
Kule w wykonaniu:  
00 - standardowa stal łożyskowa  
01 - stal nierdzewna 1.4034

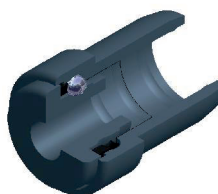
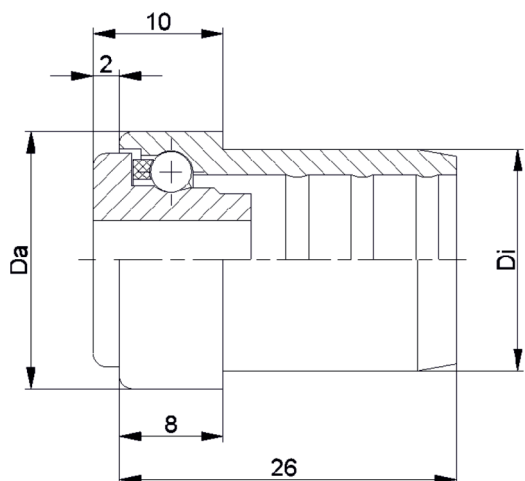

**KTR-16.00**  
**KTR-16.01**

**D [mm]**  
 16

**d [mm]**  
 5; 6

**C [daN]**  
 3

**T [°C]**  
 0° - 80°

**Carton [pcs.]**

500

**KTR**



#### KTR-20.00/01

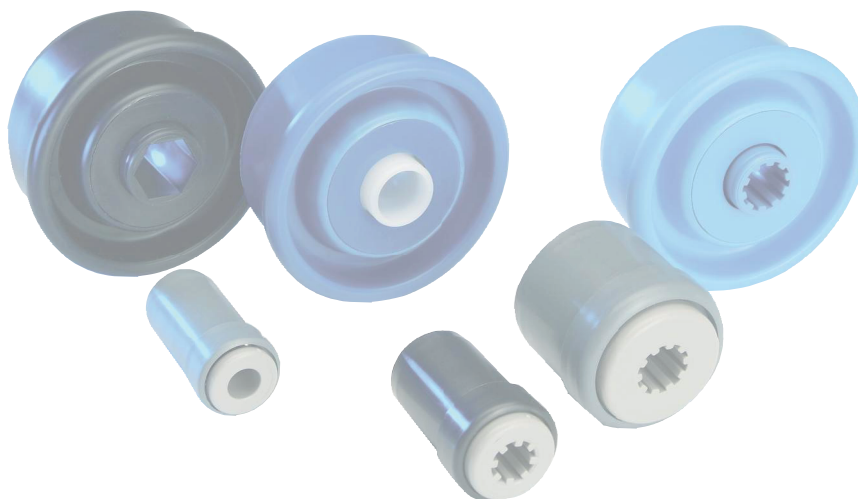
Typ	Normal .00	Stainless .01	Di +0,15	Da	Load Rating C [daN]
KTR-20x1,0	x	x	18,1	19,9	5
KTR-20x1,5	x	x	17,1	19,9	5

Piasta i koszyk kul z tworzywa sztucznego.

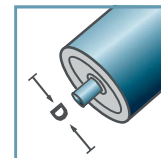
Kule w wykonaniu:

00 - standardowa stal łożyskowa

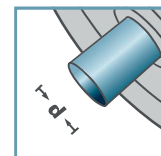
01 - stal nierdzewna 1.4034



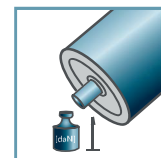
KTR-20.00  
KTR-20.01



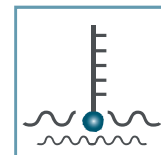
D [mm]  
20



d [mm]  
6; 8



C [daN]  
5



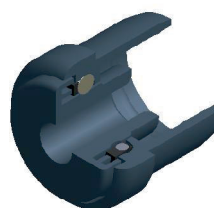
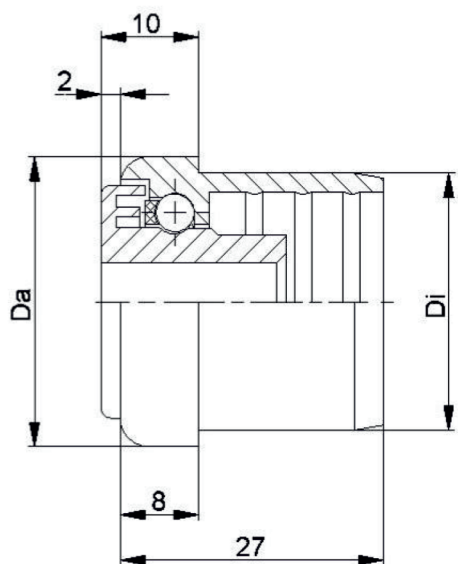
T [°C]  
0° - 80°



Carton [pcs.]

1000

**KTR**



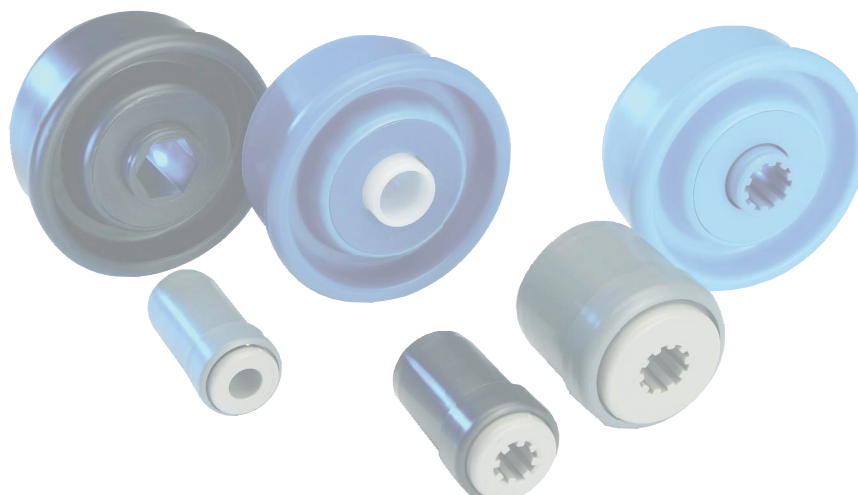
KTR-30.00/.01					
Typ	Normal .00	Stainless .01	Di +0,25	Da	Load Rating C [daN]
KTR-30x1,0	x	x	28,1	29,9	7
KTR-30x1,5	x	x	27,1	29,9	7
KTR-30x1,8	x	x	26,5	29,9	7
KTR-30x2,0	x	x	26,35	29,9	7

Piasta i koszyk kul z tworzywa sztucznego.

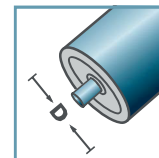
Kule w wykonaniu:

00 - standardowa stal łożyskowa

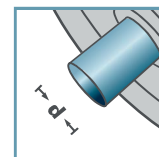
01 - stal nierdzewna 1.4034



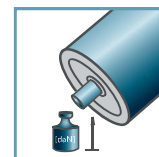
KTR-30.00  
KTR-30.01



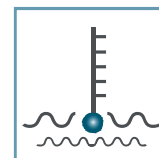
D [mm]  
30



d [mm]  
6; 8; 10



C [daN]  
7



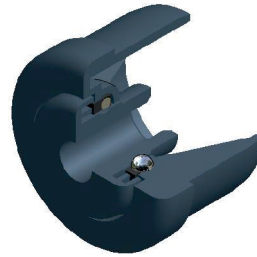
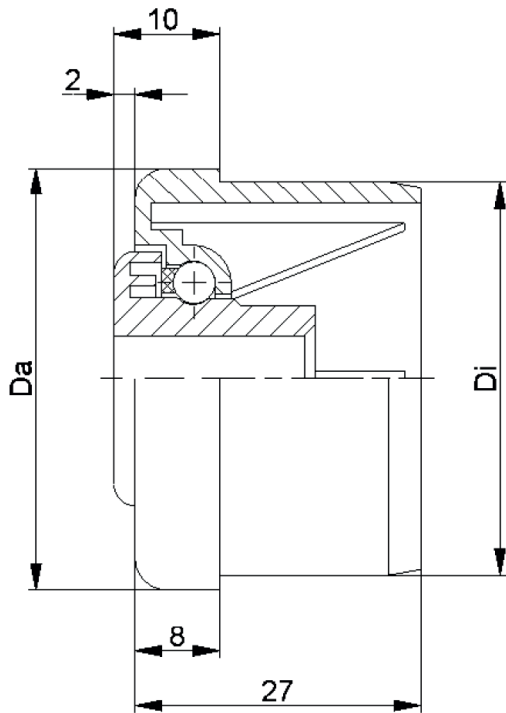
T [°C]  
0° - 80°



Carton [pcs.]

250

KTR


**KTR-40.00/01**

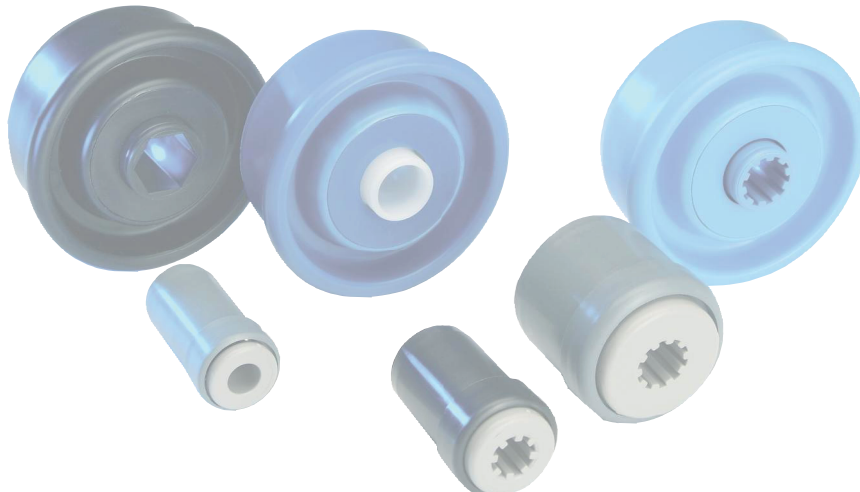
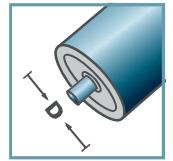
Typ	Normal .00	Stainless .01	Di +0,25	Da	Load Rating C [daN]
KTR-40x1,5	x	x	37,1	39,9	7
KTR-40x2,3	x	x	35,5	39,9	7

Piasta i koszyk kul z tworzywa sztucznego.

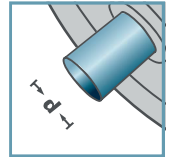
Kule w wykonaniu:

00 - standardowa stal łożyskowa

01 - stal nierdzewna 1.4034


**KTR-40.00  
KTR-40.01**


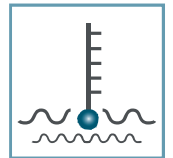
**D** [mm]  
40



**d** [mm]  
6; 8; 10



**C** [daN]  
7

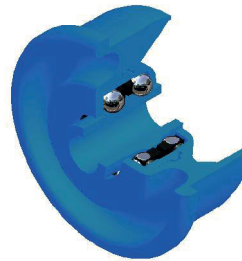
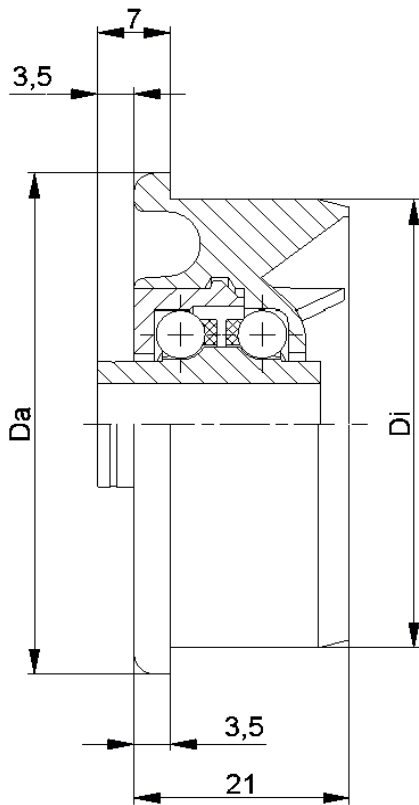


**T** [°C]  
0° - 80°



**Carton** [pcs.]

250



### KTR-02/03

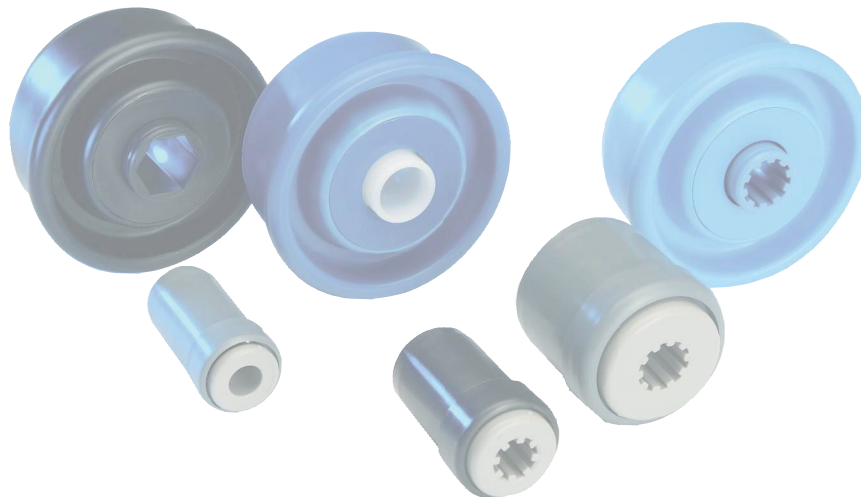
Typ	Normal	Stainless	Di +0,2	Da	Load Rating C [daN ]
	.02	.03			
KTR-50x1,5	x	x	47,3	49,9	15
KTR-50x2,0	x	x	46,3	49,9	15
KTR-50x2,8	x	x	44,6	49,9	15

Piasta i koszyk kul z tworzywa sztucznego.

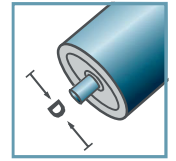
Kule w wykonaniu:

00 - standardowa stal łożyskowa

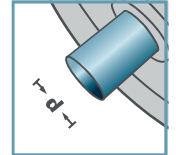
01 - stal nierdzewna 1.4034



### KTR-02 KTR-03



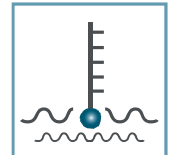
D [mm]  
50



d [mm]  
8; 10



C [daN]  
15



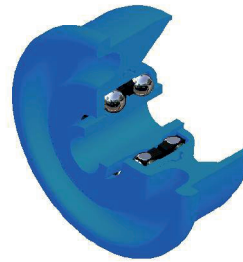
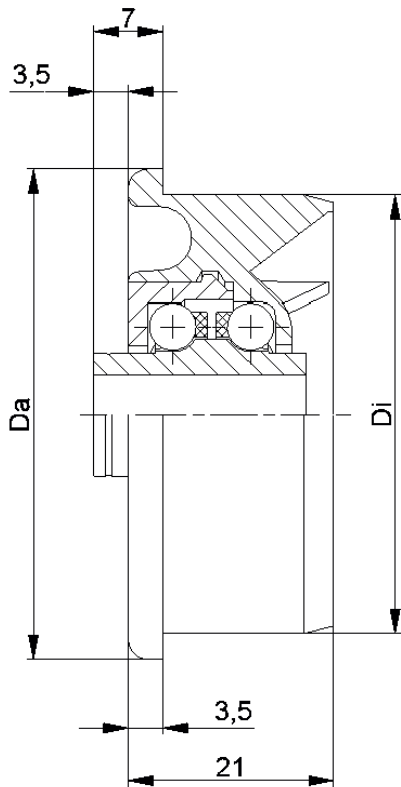
T [°C]  
0° - 80°



Carton [pcs.]

50x1,5: 250  
50x2,0: 250  
50x2,8: 250

# KTR



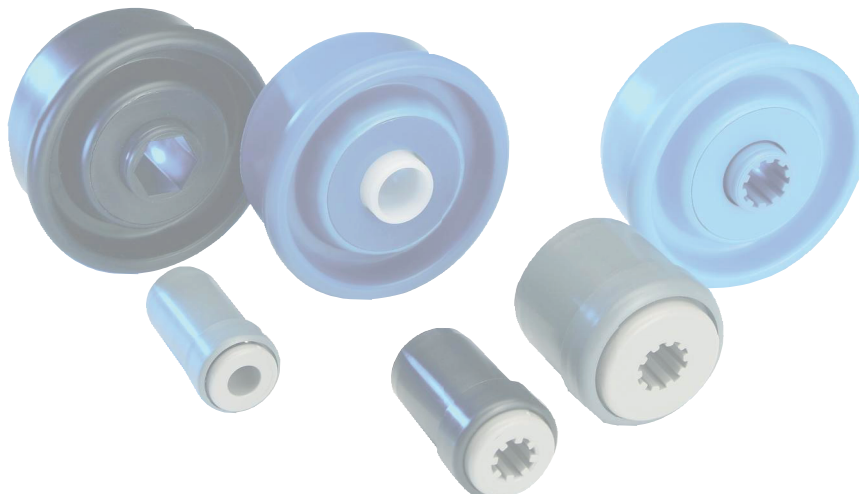
KTR-02/03					
Typ	Normal .02	Stainless .03	Di +0,2	Da	Load Rating C [daN]
KTR-50x1,5	x	x	47,3	49,9	10
KTR-50x2,8	x	x	44,6	49,9	10

Piasta i koszyk kul z tworzywa sztucznego.

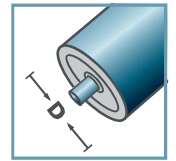
Kule w wykonaniu:

00 - standardowa stal łożyskowa

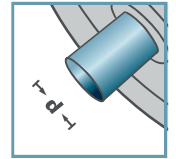
01 - stal nierdzewna 1.4034



KTR-02  
KTR-03



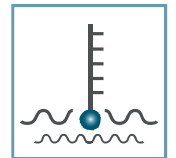
D [mm]  
50



d [mm]  
12; SW11



C [daN]  
10



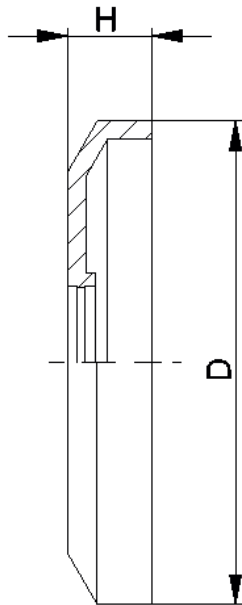
T [°C]  
0° - 80°



Carton [pcs.]

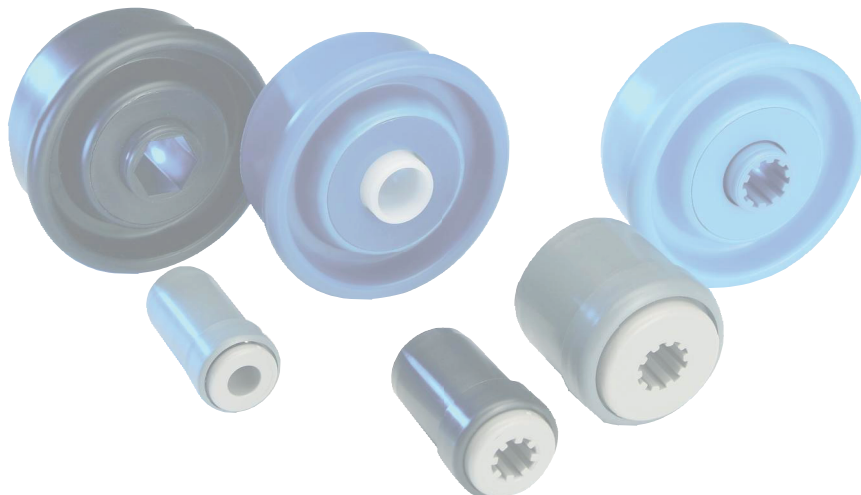
250

KTR

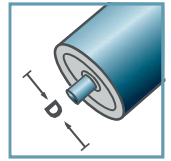


DK-KTR		
Typ	D	H
DK-KTR-02	40,5	7

Pokrywka uszczelniająca z tworzywa sztucznego

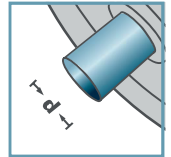


DK-KTR-02



D [mm]

-



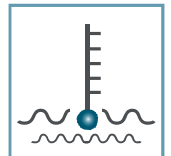
d [mm]

-



C [daN]

-



T [°C]

0° - 80°



-

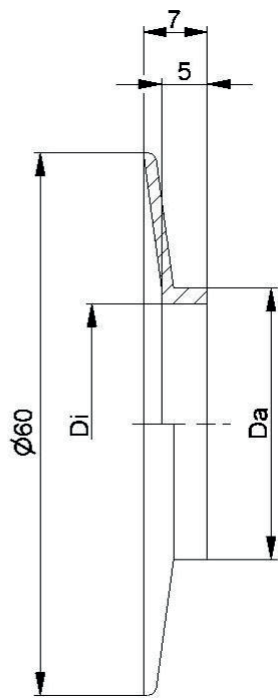


Carton [Stck]

-

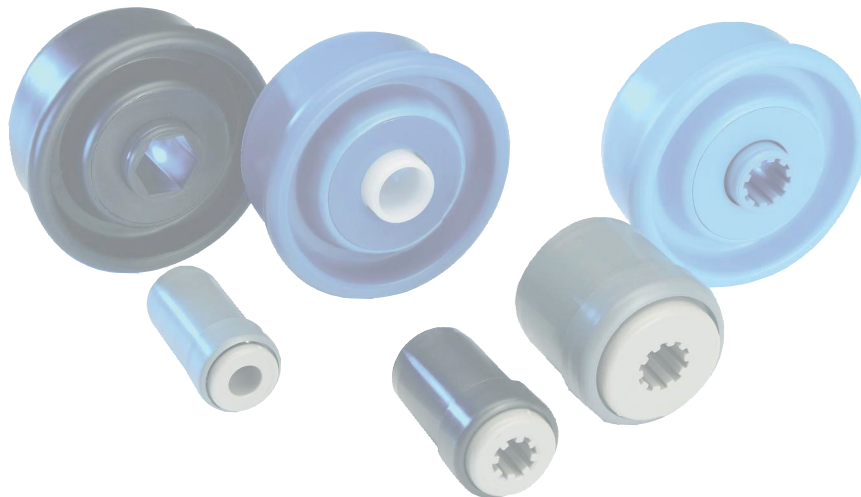
KTR



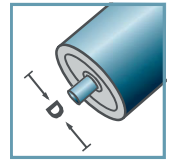


BS-		
Typ	Di	Da
BS-30x1,0	28,1	29,9
BS-30x1,8	26,5	29,9
BS-40x1,5	37,1	39,9
BS-40x2,3	35,5	39,9

Kołnierz prowadzący z tworzywa sztucznego

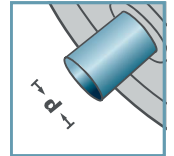


BS-



D [mm]

-



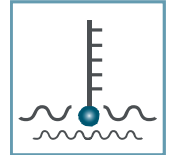
d [mm]

-



C [daN]

-



T [°C]

0° - 80°



-



Carton [pcs.]



KTR